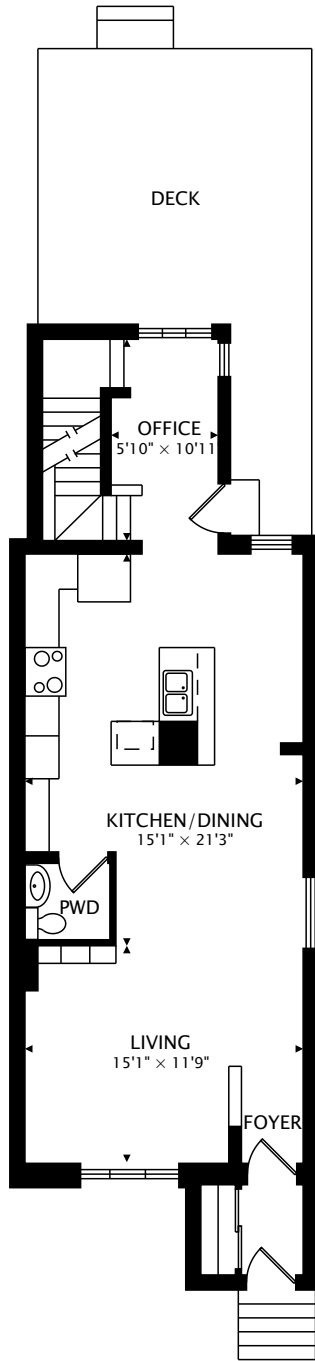
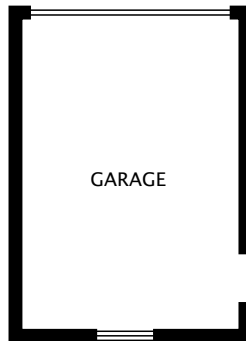


270 WOBURN AVENUE
TORONTO, ONTARIO M5M 1K9

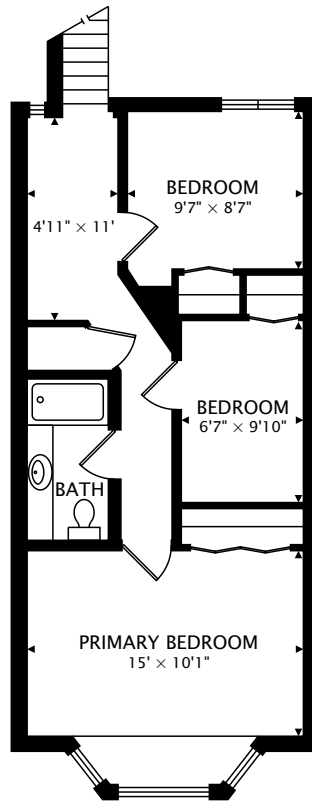


MAIN
758 sq ft

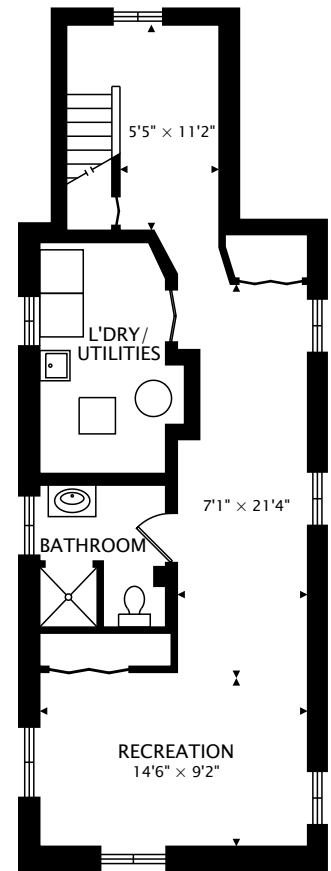


GARAGE

GARAGE



SECOND
616 sq ft



LOWER
709 sq ft BELOW GRADE

TOTAL

1374 sq ft + 709 sq ft BELOW GRADE



CAPTURED ON: 21 APR 2021

DIMENSIONS, AREAS, LAYOUTS AND DETAILS ARE APPROXIMATE
AND SHOULD BE CONSIDERED ILLUSTRATIVE ONLY.