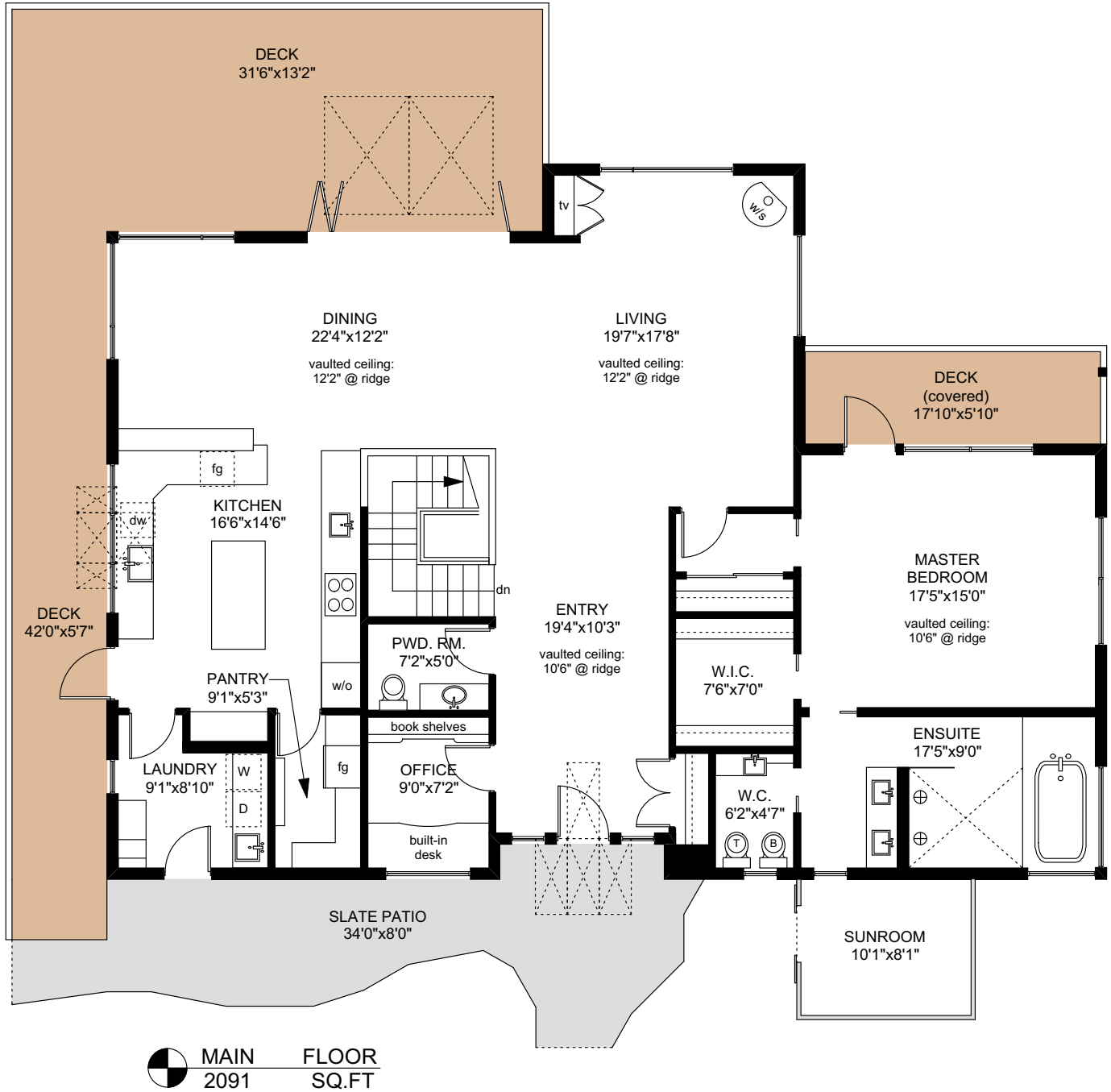
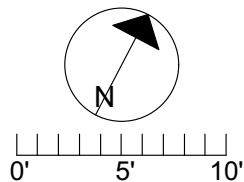


# 2902 SOUTHEY POINT ROAD



	FINISHED SQ. FT.	UNFINISHED SQ. FT.	TOTAL SQ. FT.
MAIN	2091	0	2091
LOWER	2091	0	2091
<b>TOTAL</b>	<b>4182</b>	<b>0</b>	<b>4182</b>
DECKS	0	754	754
PATIOS	0	1962	1962
CARPORT	0	604	604
SUNROOM	0	88	88
G-HOUSE	0	121	121

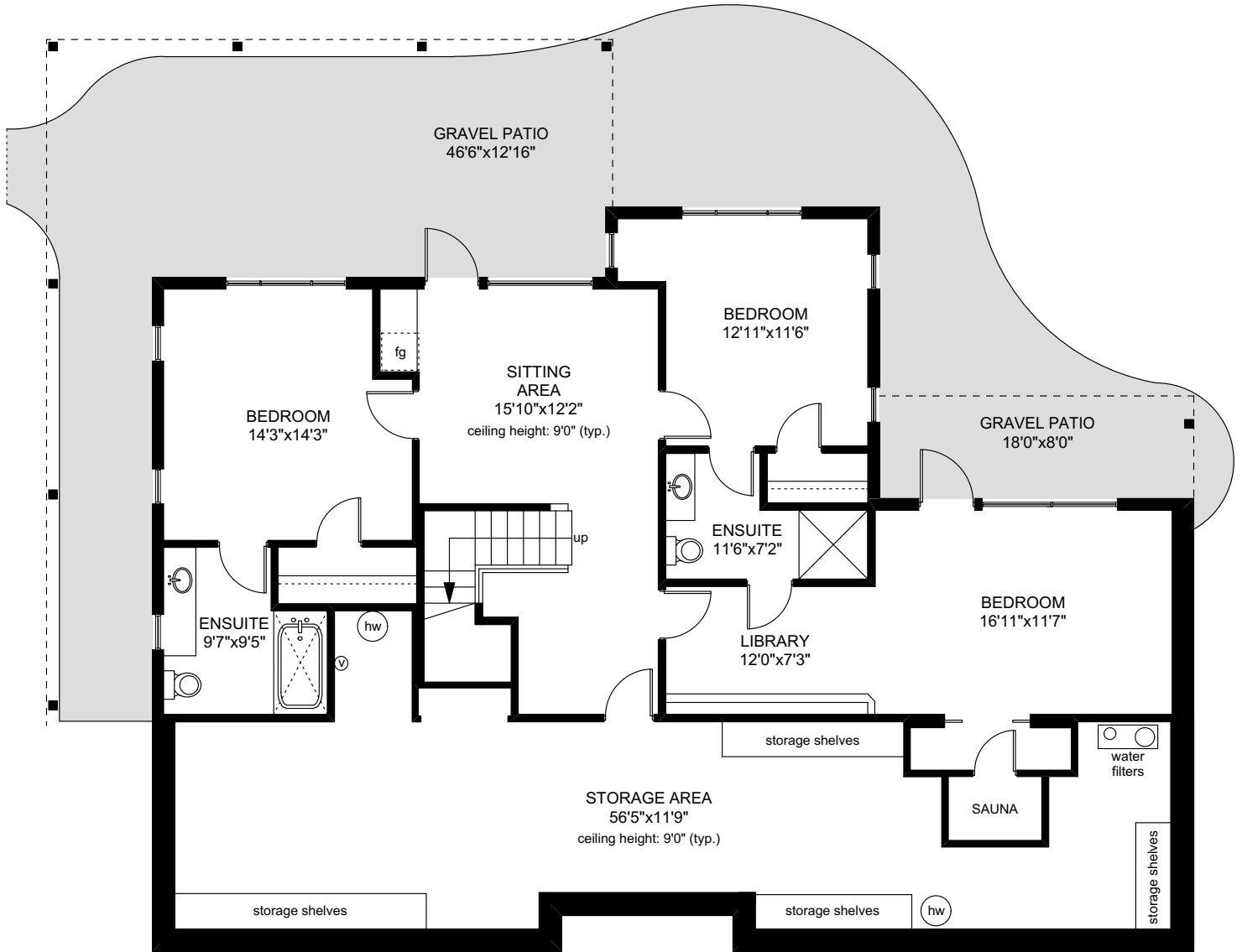



PREPARED FOR THE EXCLUSIVE USE OF  
CHRIS & DARLENE HOBBS OF  
SOTHEBY'S INTERNATIONAL REALTY CANADA

MEASURED ON: 02.20.21  
DRAWING FILE: 0297

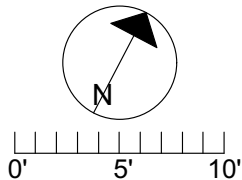
NOTE: This floor plan is provided by Chris & Darlene Hobbs of Sotheby's International Realty Canada as a convenient reference only, and is not to be relied upon as accurate. Prospective Buyers must satisfy themselves not only of the actual measurements, but also to the status of any finished space shown on this floor plan, specifically in relation to minimum ceiling height for habitable rooms required by the BC Building Code, allowable finished floor area in relation to current zoning, and determination if space was developed with necessary municipal permits.

# 2902 SOUTHEY POINT ROAD



 LOWER FLOOR  
2091 SQ.FT

	FINISHED SQ. FT.	UNFINISHED SQ. FT.	TOTAL SQ. FT.
MAIN	2091	0	2091
LOWER	2091	0	2091
<b>TOTAL</b>	<b>4182</b>	<b>0</b>	<b>4182</b>
DECKS	0	754	754
PATIOS	0	1962	1962
CARPORT	0	604	604
SUNROOM	0	88	88
G-HOUSE	0	121	121

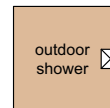
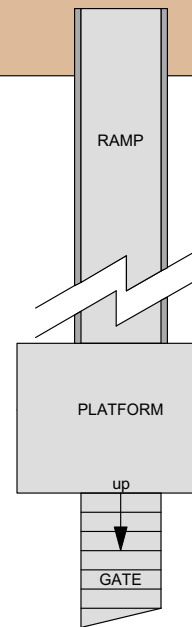
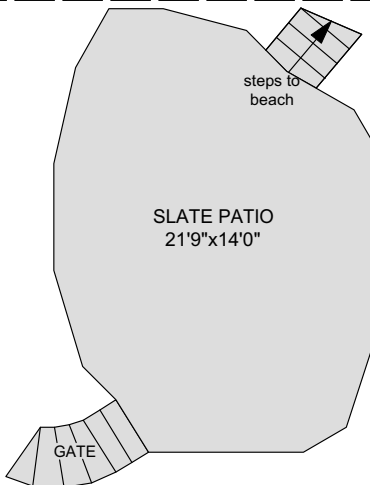
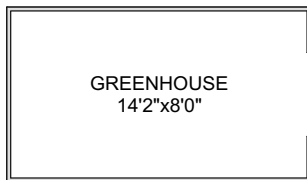
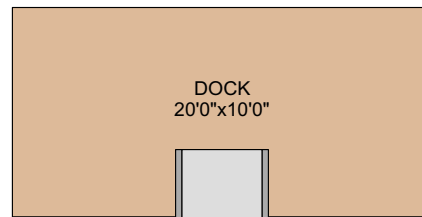
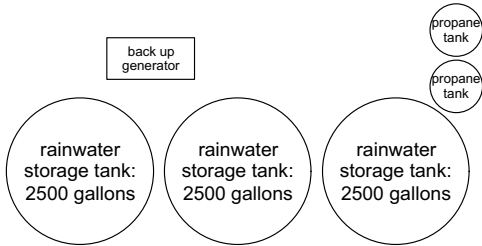
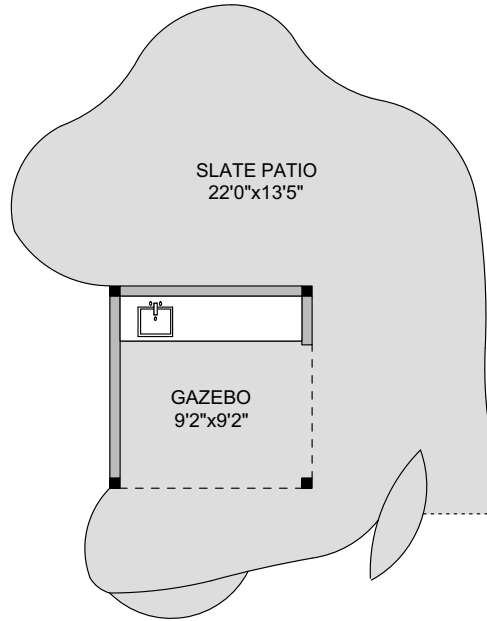
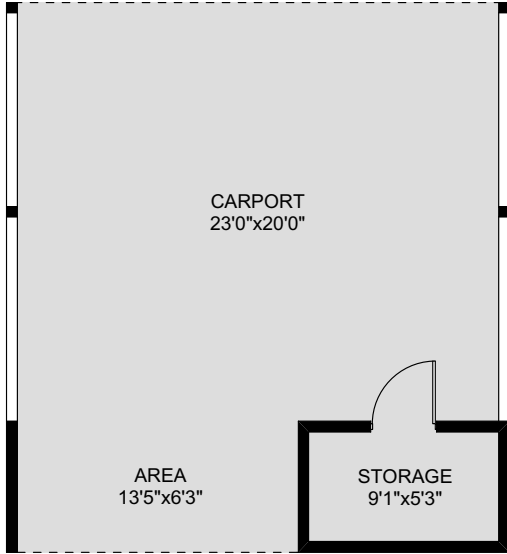


PREPARED FOR THE EXCLUSIVE USE OF  
CHRIS & DARLENE HOBBS OF  
SOTHEBY'S INTERNATIONAL REALTY CANADA

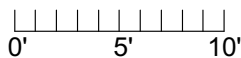
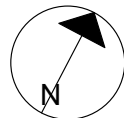
MEASURED ON: 02.20.21  
DRAWING FILE: 0297

NOTE: This floor plan is provided by Chris & Darlene Hobbs of Sotheby's International Realty Canada as a convenient reference only, and is not to be relied upon as accurate. Prospective Buyers must satisfy themselves not only of the actual measurements, but also to the status of any finished space shown on this floor plan, specifically in relation to minimum ceiling height for habitable rooms required by the BC Building Code, allowable finished floor area in relation to current zoning, and determination if space was developed with necessary municipal permits.

# 2902 SOUTHEY POINT ROAD



	FINISHED SQ. FT.	UNFINISHED SQ. FT.	TOTAL SQ. FT.
MAIN	2091	0	2091
LOWER	2091	0	2091
<b>TOTAL</b>	<b>4182</b>	<b>0</b>	<b>4182</b>
DECKS	0	754	754
PATIOS	0	1962	1962
CARPORT	0	604	604
SUNROOM	0	88	88
G-HOUSE	0	121	121



PREPARED FOR THE EXCLUSIVE USE OF  
CHRIS & DARLENE HOBBS OF  
SOTHEY'S INTERNATIONAL REALTY CANADA

MEASURED ON: 02.20.21  
DRAWING FILE: 0297

NOTE: This floor plan is provided by Chris & Darlene Hobbs of Sotheby's International Realty Canada as a convenient reference only, and is not to be relied upon as accurate. Prospective Buyers must satisfy themselves not only of the actual measurements, but also to the status of any finished space shown on this floor plan, specifically in relation to minimum ceiling height for habitable rooms required by the BC Building Code, allowable finished floor area in relation to current zoning, and determination if space was developed with necessary municipal permits.