



Sotheby's | Canada
INTERNATIONAL REALTY

For your slice of happiness

12678 Ocean Cliff Drive, South Surrey, BC
3 BED 2.5 BATH 1,287 SQ.FT.

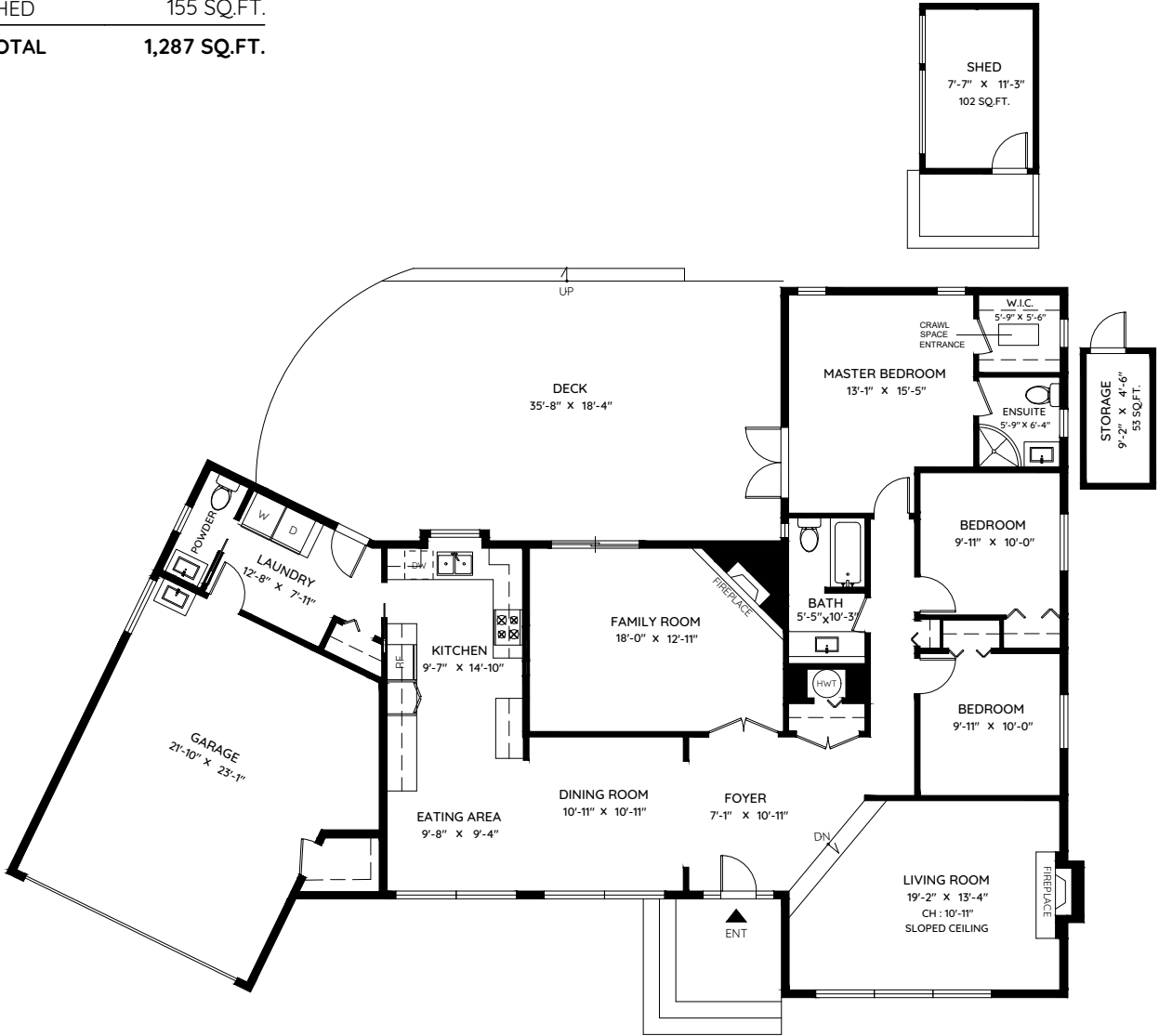




12678 OCEAN CLIFF DRIVE

SURREY, BC

LIVING AREA	1,874 SQ.FT.
CEILING HEIGHT	8'-0"
GARAGE	487 SQ.FT.
DECK	645 SQ.FT.
SHED	155 SQ.FT.
TOTAL	1,287 SQ.FT.









BEAUTIFUL OCEAN CLIFF CRAFTSMAN HOME

12678 Ocean Cliff Drive, South Surrey, BC
3 BED 2.5 BATH 1,287 SQ.FT. LOT: 8,551 SQ.FT.
Property ID: R2542755 | sothebysrealty.ca

\$1,449,000

Ocean Cliff Estates Craftsman style, 3 bedroom 3 bathroom updated rancher. 8,551 sq. ft. private southwest facing yard with a she-shed powered and ready for your guests or private office space. Spacious partially covered composite deck for those warm summer bbqs. Sought after subdivision of tree lined boulevards and within blocks of Crescent Park, Crescent Beach, Ocean Cliff Elementary, Elgin Park Secondary, public transit and Ocean Park Shopping Centre.



PHILIP DUMOULIN

Senior Vice President, Sales

604.787.2114
pdumoulin@sothebysrealty.ca
dumoulin-miller.com



SANDRA MILLER

Personal Real Estate Corporation

778.833.1169
smiller@sothebysrealty.ca
dumoulin-miller.com



SUMMER SKARICH

Sales Representative

604.351.3874
sskarichi@sothebysrealty.ca
summerskarich.com

