

12678 OCEAN CLIFF DRIVE

SURREY, BC

Sotheby's | Canada
INTERNATIONAL REALTY

SANDRA MILLER

778 833 1169
smiller@sothebysrealty.ca

LIVING AREA 1,874 SQ.FT.

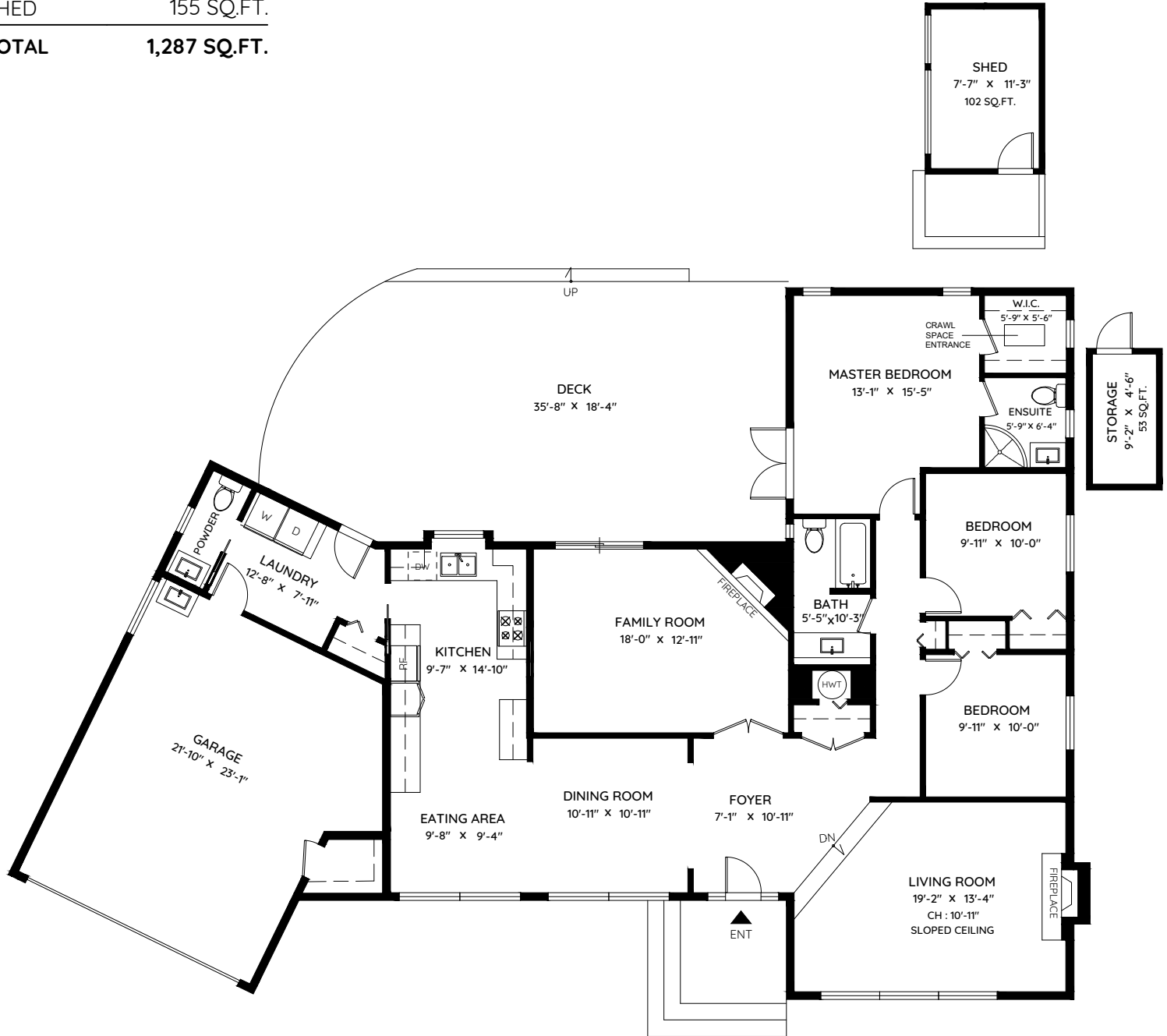
CEILING HEIGHT 8'-0"

GARAGE 487 SQ.FT.

DECK 645 SQ.FT.

SHED 155 SQ.FT.

TOTAL 1,287 SQ.FT.



0 ft 3 ft 5 ft

The floor plan and the measurements are approximate and are to be used for advertising usage only. Not suitable for architectural or construction. E&O Insured

keyplan
plan your space

Booked on
the Pixelink App™

